

COLD STATION

sks kitchener™

Buffet-cooking stations & cooking equipment

MOBILE CHILLER STATION MS01-101A

MOBILE BAR MS01-102A

UFO CRESCENT STATION CS01-401A

UFO STATION CS01-600A

SPECIFICATION

- MATERIAL**
- M1. Tempered glass
 - M2. Stainless steel 304 body
 - M3. Custom blend translucent blue acrylic

- EQUIPMENT**
- E1. One unite of refrigerator with 2 glasses door.
(SS 304 door - optional for outdoor use)
 - E2. Flourescent back lid
 - E3. Tente Germany heavy duty wheels 3" (6 units)

- FEATURES**
- F1. 2-tier tempered glass to display alcohol
 - F2. Stainless steel 304 hair line finish for body
 - F3. Luminant effect on blue acrylic
 - F4. Refrigerator to store drinks

- DIMENSION** 1900 mm (L) x 615 mm (W) x 1987 mm (H)

31

MOBILE CHILLER STATION

MODEL NO. : MS01-101A

SKS Kitchener®
Buffet-cooking stations & cooking equipment





MOBILE BAR

MODEL NO. : MS01-102A

32

SKS KITCHENER
Buffet-cooking stations & cooking equipment

SPECIFICATION

MATERIAL M1. Translucent solid face
M2. Stainless steel 304 body
M3. Custom blend translucent blue acrylic

EQUIPMENT E1. Stainless steel 304 **ice bin** with removable bins below
E2. Stainless steel 304 **sink & tap**
E3. Fluorescent back lid
E4. Tente Germany heavy duty wheels 3" (6 units)
E5. Overhead SS304 **champagne flute & wine glass holder**

FEATURES F1. **Translucent solid face bar counter top** and bottom with lighting and recessed edge to prevent glass from slipping
F2. Mirror finished stainless steel 304 for wine and champagne glass frame and hair line finished stainless steel 304 for body covered
F3. Luminant effect on translucent blue acrylic

DIMENSION 1900 mm (L) x 815 mm (W) x 1987 mm (H)

SPECIFICATION

MATERIAL M1. Caesar stone
M2. Stainless steel 304 body
M3. Custom blend blue translucent acrylic

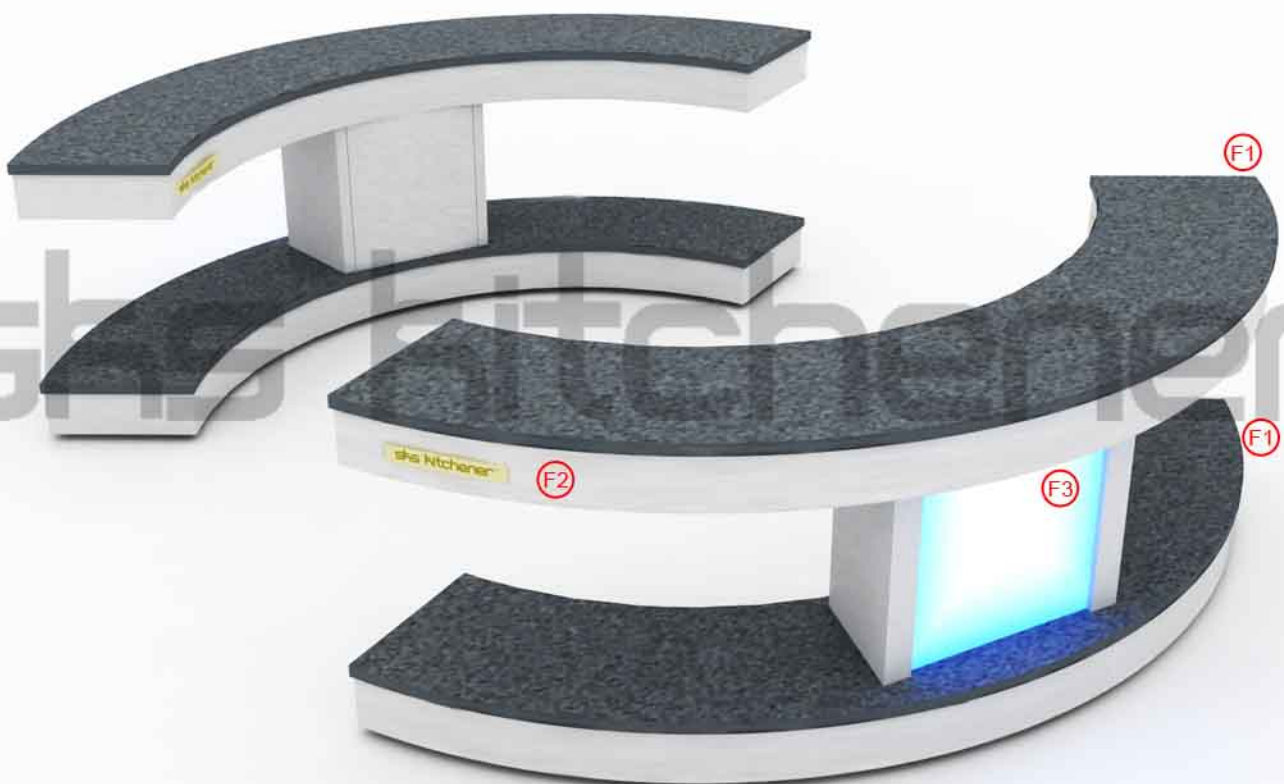
EQUIPMENT E1. Custom blend blue translucent acrylic piece
E2. Tente Germany heavy duty wheels 3" (6 units)

FEATURES F1. **Top and bottom surface** covered with caesar stone
F2. Stainless steel 304 hair line finished for body
F3. Luminant effect on translucent blue acrylic

DIMENSION 1784 mm (L) x 665 mm (W) x 683 mm (H)

UFO CRESENT STATION

MODEL NO. : CS01-401A





UFO STATION
MODEL NO. : CS01-600A

34

sks kitchener
Buffet-cooking stations & cooking equipment

SPECIFICATION

MATERIAL M1. Stainless steel 304 body
M2. Acrylic glass hood

FEATURES

- F1. Stainless steel 304 body
- F2. Automatic defrost
- F3. Adjustable globe height complete with remote control
- F4. Accessible from all sides, always an attractive centerpoint
- F5. Contact cooling, air circulation cooling
- F6. Extensive accessories for food presentation
- F7. Durable and maintenance-free, easy to clean
- F8. energy efficient, LED-lighting
- F9. Acrylic dome functions as a cover and hygienic barrier, movable by electric lifting device.
- F10. Plug and play, integrated cooling machine, mounted on castors.
- F11. Intergral drain allows the use of ice
- F12. compliant to international hygiene and safety regulations (TUV, CE, HACCP)

DIMENSION Diameter 1470 mm x 1540 mm (Close Height) 2040 mm (Open Height)



35 UFO COLD STATION

MODEL NO. : CS01-401A
CS01-600A

sks kitchener
Buffet-cooking stations & cooking equipment

